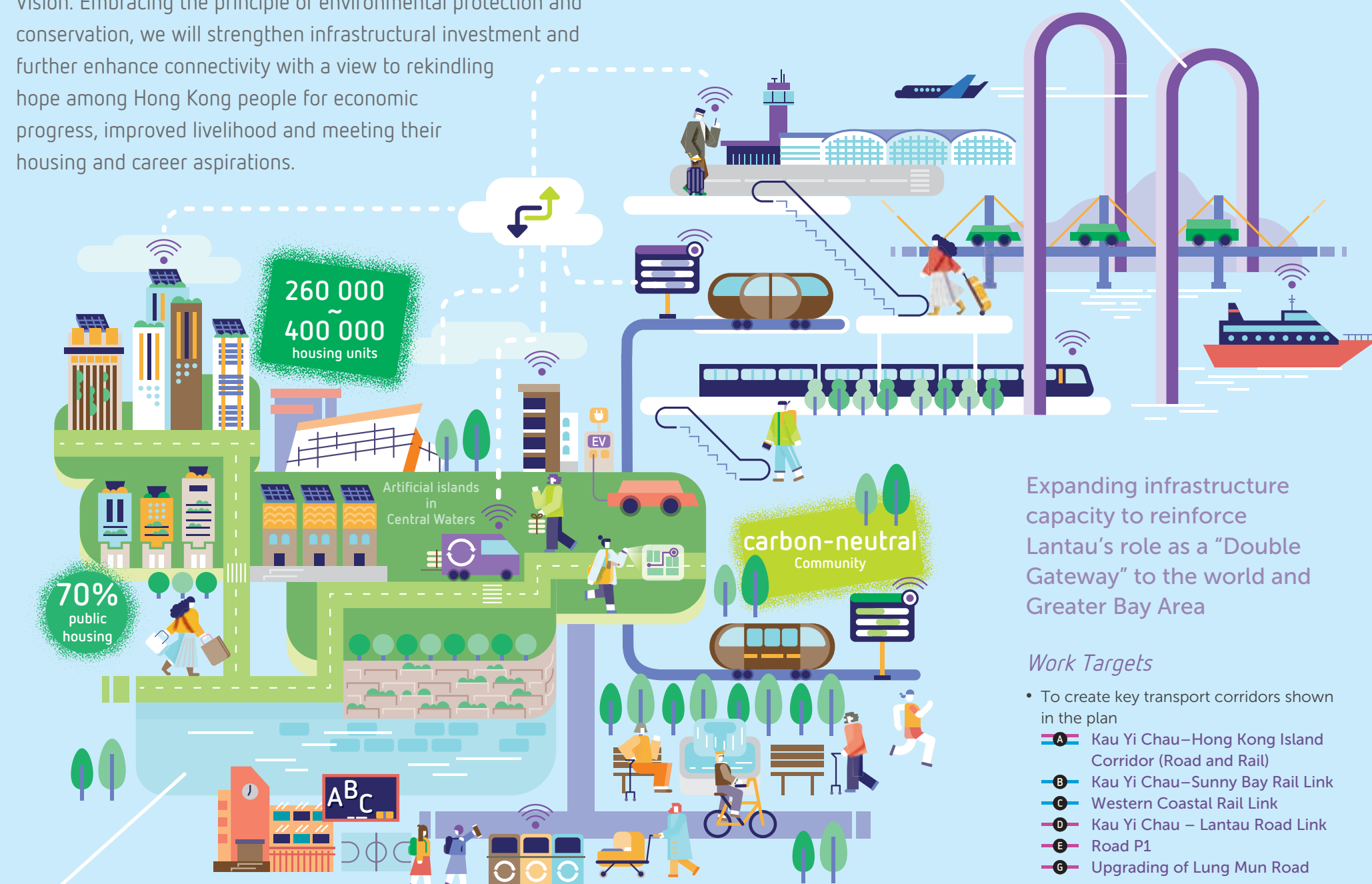
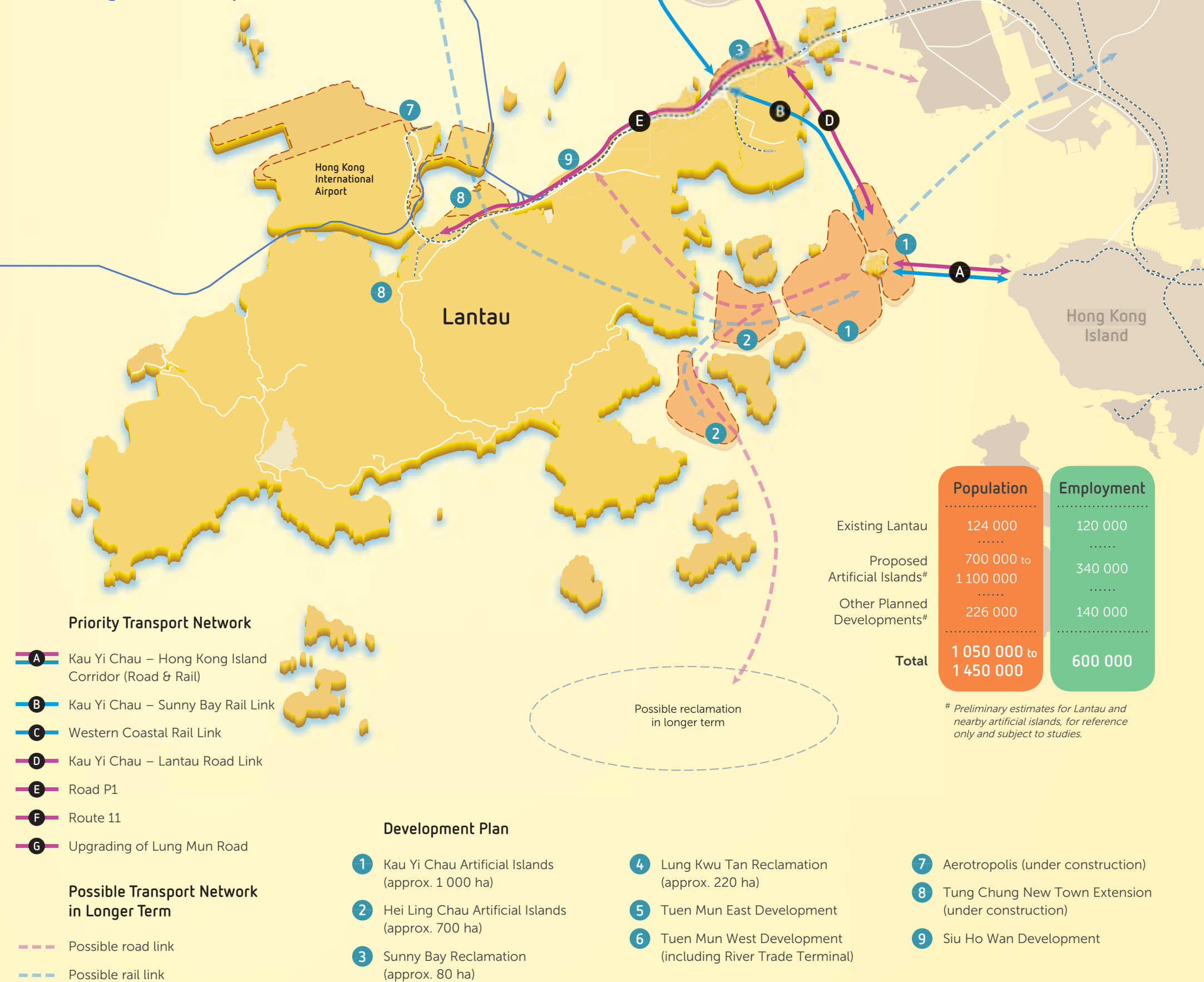


Being the home of the Hong Kong International Airport, the role of Lantau as the “Double Gateway” to the world and the Greater Bay Area will be reinforced upon the commissioning of the Hong Kong-Zhuhai-Macao Bridge. There will be a convergence of talents, visitors and innovative economic developments. To harness the advantages and opportunities of Lantau, we promulgate the **Lantau Tomorrow Vision**. Embracing the principle of environmental protection and conservation, we will strengthen infrastructural investment and further enhance connectivity with a view to rekindling hope among Hong Kong people for economic progress, improved livelihood and meeting their housing and career aspirations.



Conceptual Development and Strategic Transport Plan



Sustainability and Conservation

Enhancing environmental capacity to achieve sustainability

\$1 billion

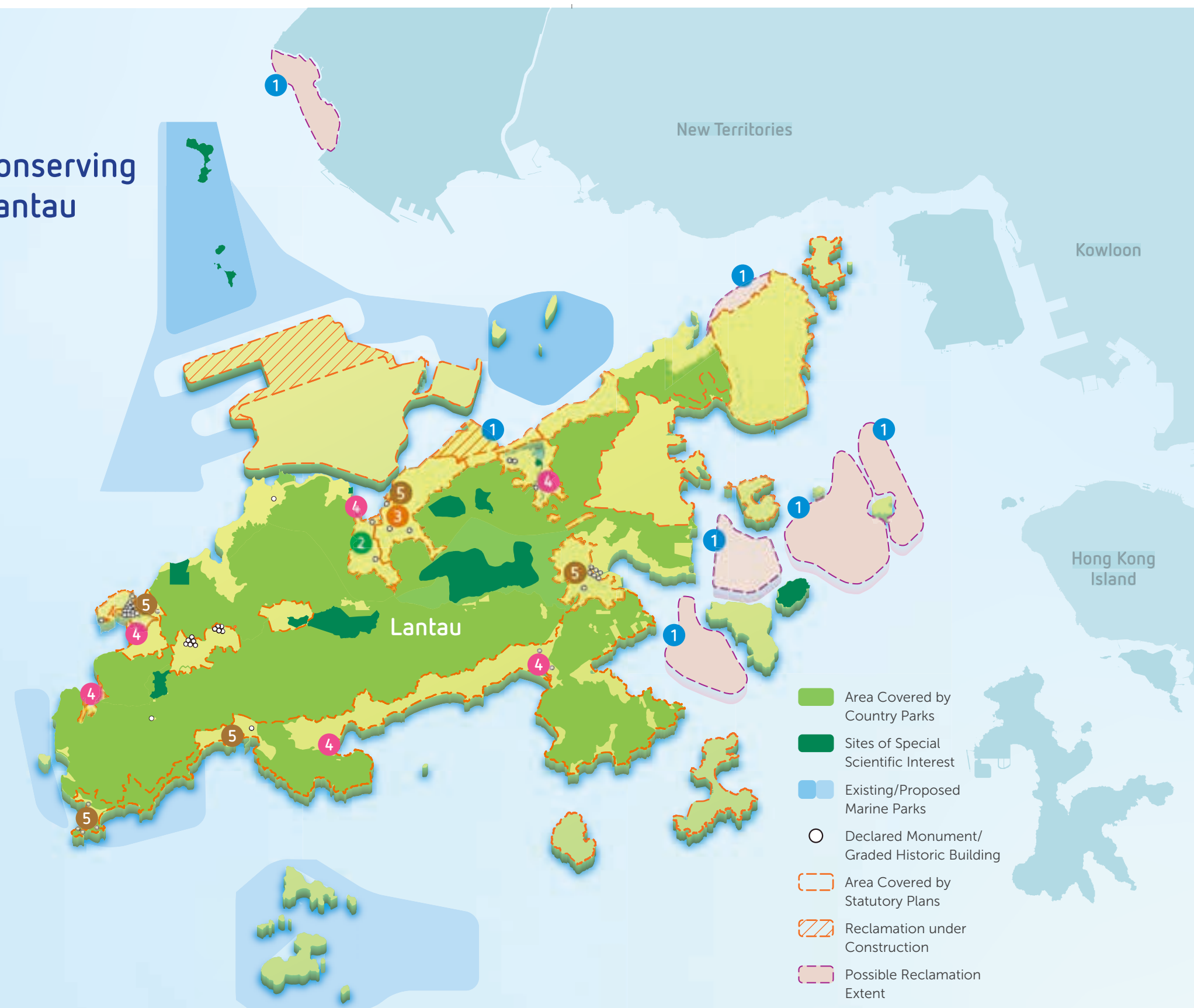
Development in the North
Conservation to precede
Developments



Work Targets

- To set up a **\$1 billion Lantau Conservation Fund** to promote/carry out conservation projects and local improvement works to improve the rural environment on Lantau
- To review concerned legislations and map out more effective means to control land filling, dumping of wastes and associated development activities causing environmental damage in areas of high ecological value at Lantau with a view to enhancing protection of the natural environment
- To explore practical means to compensate for the habitat loss as a result of large-scale reclamation and land-based development projects

Conserving Lantau



Site Specific Initiatives

- 1 Apply Eco-shoreline
- 2 Build Tung Chung River Park
- 3 Set Up Exhibition Centre on Nature and Cultural Heritage at Tung Chung
- 4 Conserve Areas of High Ecological Value
- 5 Conserve Areas of High Cultural Heritage Value

Protection and enhancement

- Set up a **\$1 billion Lantau Conservation Fund**
- Review concerned legislations and map out more effective means to enhance protection of the natural environment
- Explore means to compensate habitat loss as a result of development projects

Public involvement

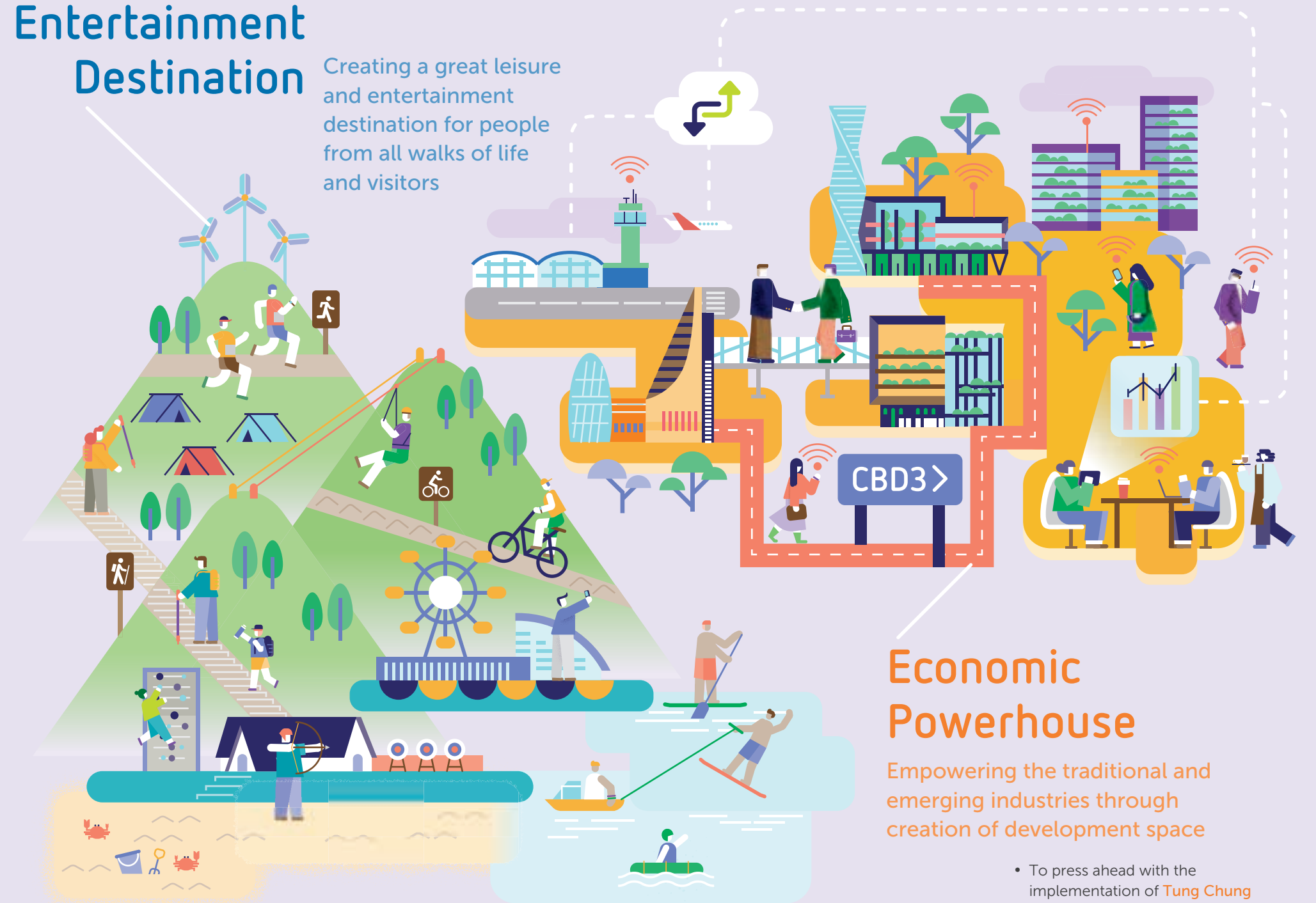
- Explore conservation projects in collaboration with Non-governmental Organisations, the community and land owners through funding support
- Organise education programmes to promote public awareness

Public enjoyment

- Formulate Lantau Trails and Recreation Plan
- Implement local improvement works

Leisure and Entertainment Destination

Creating a great leisure and entertainment destination for people from all walks of life and visitors



Work Targets

- To develop Sunny Bay reclamation into a **Leisure and Entertainment Node** for a year-round vacation destination with international and local mega competitions/sports events, leveraging on the synergy effect of the existing attractions on Lantau
- To formulate and implement in phases a comprehensive **Lantau Trails and Recreation Plan** with suitable network of walking trails to offer diversified sustainable leisure and recreation experience for public enjoyment and great opportunities for eco-tourism
- To investigate expansion or connection of the cycle tracks and the mountain bike trail network on Lantau to achieve sustainable tourism and foster green living

Economic Powerhouse

Empowering the traditional and emerging industries through creation of development space

Work Targets

- To develop the Hong Kong International Airport as an **Aerotropolis** connecting the Greater Bay Area and the world through Three-runway System, high value-added logistic centre, SKYCITY development and future plan for the AsiaWorld-Expo at the Airport Island as well as the proposed Topside Development at the Hong Kong Boundary Crossing Facilities Island.
- To press ahead with the implementation of **Tung Chung New Town Extension**, providing over 800 000 m² of commercial floor space for regional office hub, retail and hotel development, and creating about 40 000 jobs
- To create in addition to Central and Kowloon East the **third Core Business District (CBD3)** at Kau Yi Chau artificial islands through reclamation, providing 4 million m² of commercial office gross floor area
- The artificial islands in central waters as a whole will create about 340 000 jobs

You can contact us via

Website: www.lantau.gov.hk
Email: enquiry@lantau.gov.hk
Tel: (852) 2153 3364
Fax: (852) 2577 5040

Address:

Civil Engineering and Development Department
13/F, North Point Government Offices,
333 Java Road, North Point, Hong Kong

